

# Harpsichord & *fortepiano*

Vol. 16, No. 1    Autumn, 2011

© Peacock Press.

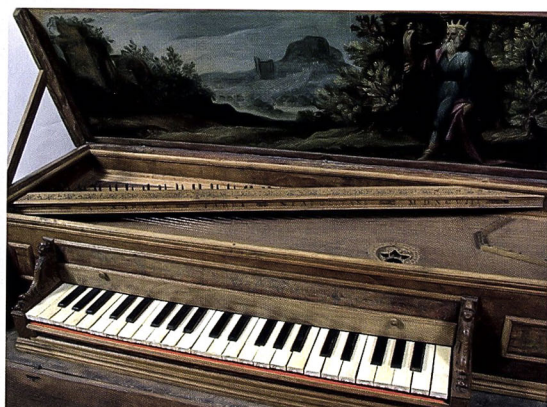
Licensed under [CC BY-NC 4.0](https://creativecommons.org/licenses/by-nc/4.0/).

You are free to share and adapt the content for non-commercial purposes, provided you give appropriate credit to Peacock Press and indicate if changes were made. Commercial use, redistribution for profit, or uses beyond this license require prior written permission from Peacock Press.

Musical Instrument Research Catalog  
(MIRCat)



# Harpsichord & fortepiano

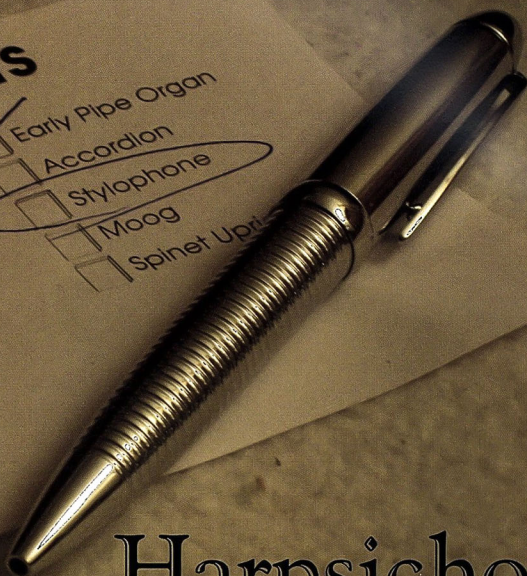




# know thyself...

## Interests

- ☐ Hammond Synthesiser
- ☒ Harpsichord
- ☒ Clavichord
- ☐ Modern Piano
- ☒ Fortepiano
- ☒ Early Pipe Organ
- ☐ Accordion
- ☐ Stylophone
- ☐ Moog
- ☐ Spinnet Upright



## Harpsichord & fortepiano

### Greenwich International Early Music Festival & Exhibition 2011 10th Anniversary! 11th - 12th - 13th November



L'ARPEGGIATA

RED PRIEST

PANTAGRUEL

MATTHIAS MAUTE

#### EXHIBITION

The world's largest  
early music fair



Advance ticket sales  
01274 288100 or  
0207 632 3960

[emssales@earlymusicshop.com](mailto:emssales@earlymusicshop.com)

#### RECITALS

MASTER CLASSES  
MOECK SOLO RECORDER  
COMPETITION FINALS



The Old Royal Naval College Greenwich London SE10 9NN

HOSTED BY THE EARLY MUSIC SHOP, THE GREENWICH FOUNDATION  
AND TRINITY LABAN CONSERVATOIRE OF MUSIC AND DANCE

[www.earlymusicfestival.com](http://www.earlymusicfestival.com)



The BRITISH  
CLAVICHORD  
SOCIETY

President: Derek Adlam

The Society was founded in 1994 to promote  
enjoyment and study of the clavichord.

Members receive a

Newsletter three times a year,  
with high-quality articles, reviews, and  
clavichord news, and they are entitled to  
reduced admission to  
BCS recitals.

Our programme for 2012 includes  
a recital by Linda Nicholson playing an  
18th-century Swedish clavichord. For details  
of this and other BCS events and activities,  
and for information on joining  
the Society, visit

[www.clavichord.org.uk](http://www.clavichord.org.uk)



# Harpsichord & fortepiano

Volume 16, No. 1

**Editor:**

Dr Micaela Schmitz  
editor@hfmagazine.info

**Publisher, Advertising,  
and Subscriptions**

Early Music Media Limited  
1 Leamington Road  
Broadway  
Worcs. WR12 7EF ENGLAND  
+44 (0) 1386 898337  
ads@hfmagazine.info  
subs@hfmagazine.info  
Please note the business  
name is now  
'Early Music Media Ltd'

**Website:**

**www.hfmagazine.info**

View our style/submissions  
guide, ad rates,  
renew your subscription  
online, and  
learn more about  
early keyboards.

**Issue Dates and Deadlines:**

Spring (5 January)  
Autumn (5 July)

**Graphic Design:**

D&P Design and Print

**Printer:**

Premier Print  
& Direct Mail Group  
Violet St, London

ISSN: 1463-0036

- 2 **A Note From the Editor**  
Letters, News and Views
  - 5 **Report: Making a Boisselot** by *Paul McNulty*
  - 7 **Who's Making What?**  
*Compiled by the Editor*
  - 8 **Feature: Women Composers**  
**Women of Note** by *Diana Ambache*  
**Elisabeth Jacquet de la Guerre** by *Pamela Hickman*
  - 15 **A Glimpse of the Tagliavini Collection of  
Musical Instruments**  
by *Maria Virginia Rolfo*
  - 21 **Book for Thoroughbass (1786) owned by  
Ms. Avdot'ja Ivanova**  
by *Maxim Serebrennikov*
  - 27 **Tailoring The Sound Of Your Keyboard Instrument, Part I**  
by *Paul Irvin*
  - 33 **Reviews**
  - 38 **About our Contributors**
- Cover Photos:**
- Top Left:** Fanny Mendelssohn (public domain)  
and Photos by M. Berardi from the Tagliavini Collection (Fig 5-7  
in the article):
- Bottom Left:** (Fig. 5) Harpsichord by Giuseppe Maria Goccini,  
Bologna, 1725.
- Bottom Right:** (Fig. 6) Spinet of the Neapolitan type, Alessandro  
Fabri, Naples, 1598.
- Large photo:** (Fig. 7): The anonymous Italian folding  
harpsichord before the recent restoration